



CONTENTS

The BBS Sustainable
Commodities Partnership | 1

Key Partners | 2

BBS KEKAL begins
implementation of Phase
One (2019/2020) | 2

Engagement and
commitments of local and
national government | 3

The BBS Sustainable Commodities Partnership (BBS KEKAL)

The Bukit Barisan Selatan (BBS) Sustainable Commodities Partnership (Kemitraan Komoditas Lestari) ('BBS KEKAL') is a new and innovative landscape partnership to protect forests and support improved livelihoods around the Bukit Barisan Selatan National Park (BBSNP) in southern Sumatra.

Driven by a unique and pioneering collaboration between local and national government, companies, communities and civil society and led by the Wildlife Conservation Society, BBS KEKAL activities support improvements in the productivity, profitability and resilience of smallholder coffee farmers while stopping deforestation around the park boundaries.

The BBSNP is a critically important forest area, and provides vital habitat for threatened species, including the Sumatran rhino, elephant and tiger. The park spans the provinces of Lampung, South Sumatra and Bengkulu, which together make up Indonesia's principle Robusta coffee producing area, as well as being a key region for the production of other commodities, such as a cocoa and pepper. The expansion of smallholder farms, primarily for coffee, poses a major threat to the National Park. Around 26,000 hectares of forest were lost between 2000 and 2015, and 10% of the park is under active coffee production. Continued deforestation not only threatens

the future of this important ecosystem, but also poses a major risk to future agricultural productivity and farmer livelihoods in southern Sumatra, as well as exposing companies buying commodities from the region to significant supply chain risks.

BBS KEKAL builds on a shared vision for the landscape, established through a Collective Statement of Intent. Signed by fifteen organisations*, including eight companies representing two thirds of the coffee supply chain, and seven government and NGO representatives, the statement outlines a joint commitment to reduce deforestation, built on activities that create an environmentally and economically

sustainable future for smallholder farmers around the National Park. Within BBSNP, WCS is supporting the National Park Authority to develop and implement a strategy to address historical deforestation and restore priority areas, while continuing monitoring and patrols

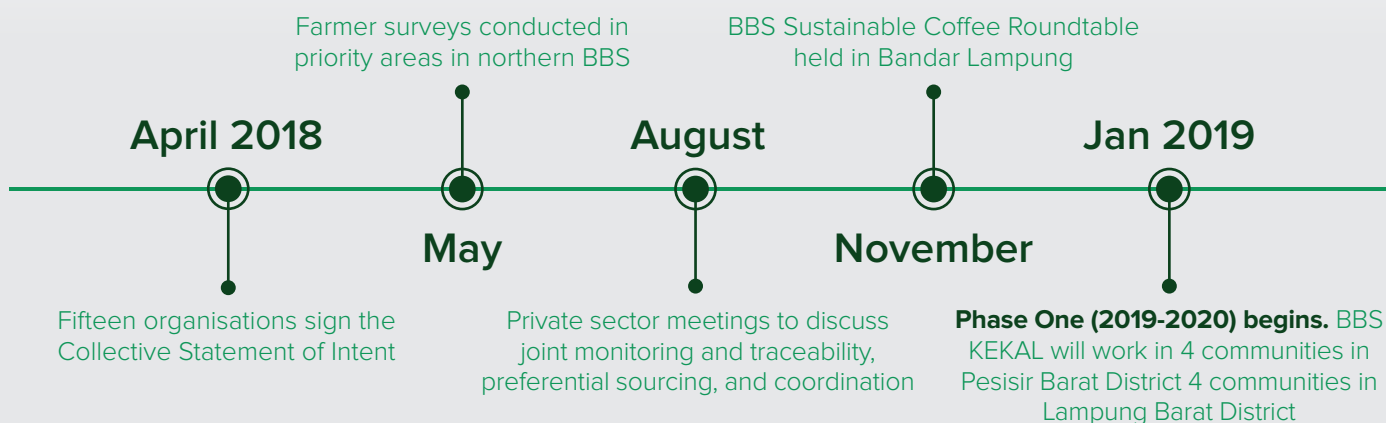
to reduce the risk of future encroachment. Outside of the park WCS is supported by the foundation, Hanns R. Neumann Stiftung (<https://www.hrnstiftung.org>), and several leading coffee companies to direct support towards farmers living adjacent

to the National Park boundary to transition to deforestation-free Robusta production. The involvement of national and local government supports the development of enabling conditions across the landscape.

Key Partners

*Signatories to the Collective Statement of Intent:

Association of Coffee Suppliers Lampung (Asosiasi Suplier Kopi Lampung; ASKL), Berindo Jaya (Neumann Kaffee Gruppe), Bukit Barisan Selatan National Park Authority, Enveritas, Hanns R. Neumann Stiftung, PT Indo Caico (ECOM), Jacobs Douwe Egberts B.V., Karya Bakti Ulubelu Farmer Group, Lampung Barat District Plantation Office, Louis Dreyfus Company, PT Mayora Indah, Nestlé S.A., Olam International, Sucden - Nedcoffee B.V., and Wildlife Conservation Society.



BBS KEKAL begins implementation of Phase One (2019/2020)

Preparations for the beginning of Phase One have been ongoing throughout 2019. Phase One is the pilot phase of the project, which will be conducted in the northern part of the BBS landscape in degraded and threatened forest areas adjacent to the National Park. Priority areas include four villages around the National Park Resort of Pugung Tampak (Rata Agung, Penengahan, Lemong and Pemandar in Pesisir Barat District) and four villages around Lumbok Resort (Ujung Rembun, Pancur Mas, Suka Banjar, Tawan

Suka Mulya in Lampung Barat District). These communities have high instances of coffee-driven deforestation, and high reliance on coffee as their main source of income. (Figure 1).

Phase One focuses on the development and trial of a monitoring and incentives framework to support farmer engagement, improved livelihoods and reduced deforestation. This includes intensive mapping of production areas and the rollout of farmer support programmes, including

training on Good Agricultural Practices (GAP) and organisational capacity building, which establish the basis for improving farmer access to finance, inputs and markets. Within the National Park, WCS is continuing its strong collaboration with the BBSNP Authority and the Ministry of Environment and Forestry to formulate new approaches and the associated governance frameworks needed to address deforestation and agricultural encroachment around its borders.

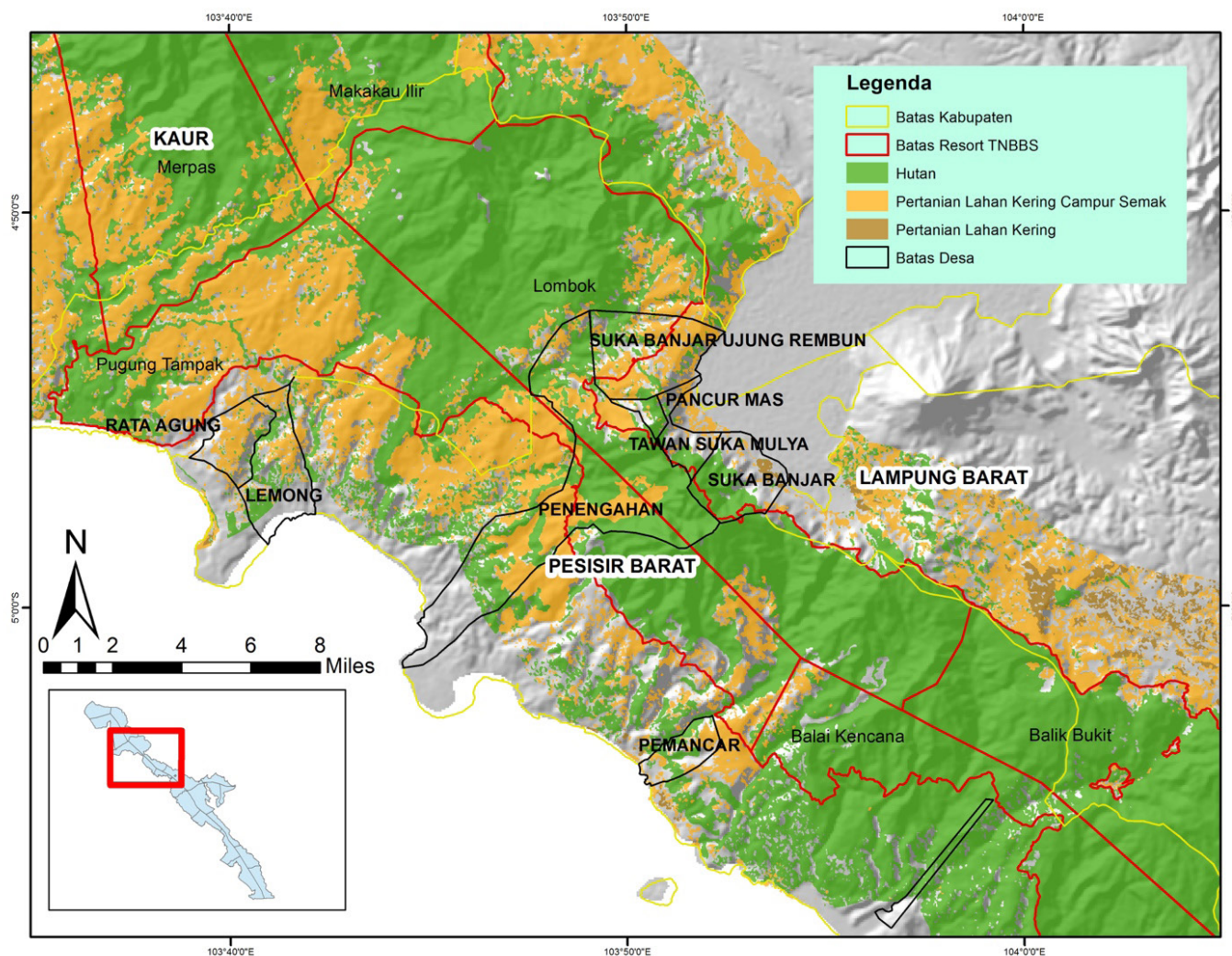


Figure 1. Map of priority implementation sites around BBSNP in the northern part of the landscape.

Engagement and commitments of local and national government

In the last 12 months, WCS has been building close relationships with local and national government agencies to formulate strategies and approaches to address coffee-driven deforestation in BBSNP:

The BBS KEKAL team has been working closely with the sub-district Heads in Lemong and Lumbok Seminung to gain support for Phase One activities across the eight pilot villages, and to support coordination between village heads. BBS KEKAL is conducting a needs assessment with communities to inform the design

of the GAP training and community capacity building programme, and is also conducting participatory rural appraisals to provide an in-depth understanding of the opportunities that exist within the communities to support the design of interventions.

At the district level, the BBS KEKAL team has met with the Lampung Barat Regent, the Pesisir Barat Regent, the Assistant to the Tanggamus Regent and other relevant agencies to explore opportunities for mainstreaming sustainable commodity strategies

into district development plans through BBS KEKAL. For example, Lampung Barat District, the largest coffee producing district in the region, has declared itself as a 'Conservation District' and is committed to a sustainable development agenda, with sustainable coffee production a key component of this. The BBS KEKAL team has been actively involved in a series of discussions with the Lampung Barat District Government to help ensure that the project goals and activities are in line with the plans and vision



Head of BBSNP signing the Collective Statement of Intent, April 2018. © WCS Indonesia/Mashadi



Robusta coffee in the BBS landscape. © WCS Indonesia

of the District Government. The District Government of Pesisir Barat is also keen to analyse the potential for development of sustainable and deforestation-free coffee in the district.

At the national level, meetings with the Ministry of Environment and Forestry's Directorate General of Conservation of Natural Resources and Ecosystems and the Director of Conservation Areas have agreed on the need to establish a "Working Group" to collect and assess comprehensive data and information on coffee-driven deforestation in BBSNP. This working group, once established, will examine the data and discuss strategies to address new and historical encroachment areas within BBSNP.

Good progress is already being made. In July 2019, the Directorate General of Conservation of Natural Resources and Ecosystems and the Government of Lampung Barat District signed a Conservation Partnership Agreement, expected to reduce encroachment in BBSNP and support the conservation of critically endangered Sumatran tigers and rhinos. This agreement will focus on the creation of a conservation partnership between the BBSNP Authority and communities in the surrounding area, particularly coffee farmers, to implement ecosystem restoration, community development and sustainable commodity production, including in BBS KEKAL project sites around Lumbok Resort. In this area, the Directorate General of

Conservation of Natural Resources and Ecosystems and the Lampung Barat District Government will focus on securing sustainable commodity production, with BBS KEKAL playing a central role.

Close engagement also continues between WCS and the BBSNP Authority through meetings and focus group discussions, with support for BBS KEKAL from the Head of the National Park, Head of Division, Resort Heads and other park staff. The project team continues to actively engage with other agencies engaged in natural resource management, including the Provincial Forestry Agencies and Natural Resource Conservation Agencies (BKSDA).

Acknowledgement

BBS KEKAL is supported by IUCN, KfW on behalf of the Federal Ministry for the Environment, Nature Conservation, and Nuclear Safety (BMU), Partnerships for Forests, Jacobs Douwe Egberts, Nestlé, Trillion Trees, Sumatran Tiger Project GEF-UNDP, and the UK Department for International Development (DFID).

Published by

BBS KEKAL

Wildlife Conservation Society Indonesia Program

Bogor, West Java 16151



Indonesia.wcs.org



WCS Indonesia



@WCS_ID



@WCS_ID