

# **Wildlife and Private Lands in Island Park, Idaho**

A SURVEY OF PRIVATE LANDOWNERS



Cornell University  
Department of Natural Resources  
Human Dimensions Research Unit



# **Wildlife and Private Lands in Island Park, Idaho**

This questionnaire addresses private landowners' attitudes toward wildlife, planning and land use in Island Park, Idaho. You were selected for this survey because you own land in Island Park, Idaho.

This is an independent research effort not connected to the county planning office or any on-going land-use planning efforts. However, the results will be provided to those working in the region and may be used to inform development and wildlife conservation efforts on private lands. We encourage you to use this survey as an opportunity to express your opinion about wildlife and private lands management.

Please have the adult who is most familiar with your land in Island Park complete this questionnaire, seal it with the white removable seal included, and drop it in any mailbox (no envelope needed); return postage has been provided. Your participation is voluntary, and your responses are extremely important to us. We would like to hear from EVERY LANDOWNER who receives this questionnaire, not just those with strong opinions.

This questionnaire has an identification number on the back so that we can remove your address from the list when you return the questionnaire, and we will not send you additional reminder notices. Your identity will be kept confidential and information you give us will never be associated with your name.

This research is being conducted by Cornell University and the Wildlife Conservation Society with funding from the Brainerd Foundation.

If you have questions regarding the survey please contact Heidi Kretser at 518-891-8872 or email [islandparksurvey@gmail.com](mailto:islandparksurvey@gmail.com)

**THANK YOU FOR YOUR ASSISTANCE!**



Printed on recycled paper

**You were selected for this survey because you own land in Island Park, Idaho. Please think about this property when you answer the survey questions.**

We mailed 678 surveys to landowners in Island Park in September 2009. Of those, 32 were undeliverable. The response rate was 42.2% with 272 usable surveys. We conducted a non-respondent telephone follow-up to look for differences between respondents and non-respondents. In summary, there were few significant differences between the respondents and non-respondents responses for Island Park to some of the key questions from this survey. One notable difference was that non-respondents are more willing to accept several of the various planning tools compared to the respondents.

**1. How long have you owned or leased property in Island Park?**

Mean= 19.60 year(s), Range = 1-83

**2. How much land do you own and/or lease in Island Park?**

*(Check all that apply and fill in the acreage.)*

97.4% I own Mean=1195 acres  
1.1% I lease \_\_\_\_\_ from the BLM  
0.7% I lease \_\_\_\_\_ from U.S. Forest Service  
0.7% I lease \_\_\_\_\_ from private landowners

**3. Do you have property or use of property in common ownership?**

70.6% No 20.8% Yes 8.7% Don't Know

**4. What are the primary uses of your property?**

*(Please check all that apply.)*

7.4% year-round residence 50.7% part-time residence  
3.3% ranching 0.4% other agricultural  
3.0% business 54.4% recreation  
13% Other (please list 4 other uses listed)

**5. Does your property have any of the following covenants or restrictions?**

*(Please check all that apply.)*

20.7% fencing limitations 5.9% conservation easements  
5.6% outdoor lighting guidelines 16.7% building envelop/no build area  
6.3% guidelines for vegetation 28.1% limitations on domestic livestock  
10.4% defensible space (for wildfires)  
7.0% Other (please list 5 other listed covenants or restrictions\_\_\_\_\_)

**6. For each statement below, circle the letter that indicates whether or not this activity occurred on your property in Island Park, Idaho, during the past year. (Please circle one letter for each item.)**

On my property since September 2008, someone...	<u>No</u>	<u>Yes</u>
a. maintained a lawn.	N	Y 22.1%
b. maintained vegetable or flower gardens.	N	Y 12.4%
c. used fertilizers, herbicides, and /or pesticides.	N	Y 25.1%
d. fed the birds.	N	Y 33.6%
e. fed other wildlife (if yes, specify: <u>5 species listed</u> )	N	Y 10.5%
f. had ornamental plantings.	N	Y 11.9%
g. had a dog(s) that goes outside.	N	Y 39.8%
h. had a cat(s) that goes outside.	N	Y 2.9%
i. had farm animals or livestock.	N	Y 4.7%
j. maintained recreational trails or unimproved roads.	N	Y 14.7%
k. stored trash/garbage/dumpster/compost outside.	N	Y 15.1%
l. stored a grill outside.	N	Y 38.0%
m. stocked a fish pond.	N	Y 1.6%
n. hunted small or big game.	N	Y 10.0%
o. trapped furbearers.	N	Y 0.8%

**7. For each statement below, circle the number that best reflects your behaviors. (Please circle one number for each item.)**

	Strongly Disagree	Disagree	Neutral	Agree	Strongly Agree
a. I try to learn as much as I can about wildlife.	0.4%	1.5%	17.2%	<b>50.8%</b>	30.2%
b. I take active measures to reduce opportunities for wildlife to damage my property and belongings.	11.6	10.4	30.1	<b>32.0</b>	15.8
c. I manage my property to protect wildlife.	2.7	3.4	32.6	<b>34.8</b>	21.5
d. I discourage certain types of wildlife from coming to my property.	21.8	25.3	<b>28.0</b>	18.7	6.2
e. I actively try to attract wildlife to my property.	19.7	22.0	<b>41.7</b>	12.4	4.2
f. I actively avoid all contact with wildlife.	29.5	25.6	<b>29.8</b>	10.1	5.0
g. I manage wildlife in order to protect my property.	14.0	17.1	<b>34.1</b>	10.1	4.7

**8. For each statement below, circle the number that best reflects your feelings.** (*Please circle one number for each item.*)

	Strongly Disagree	Disagree	Neutral	Agree	Strongly Agree
a. I enjoy watching all wildlife.	1.5%	0.8%	1.5%	34.5%	<b>61.7%</b>
b. I tolerate most nuisance wildlife problems.	1.6	6.6	17.1	<b>53.1</b>	21.7
c. I prefer to see wildlife in places other than on my land.	23.5	<b>36.5</b>	25.4	9.6	5.0
d. I do not like rodents.	4.6	7.6	20.6	<b>37.4</b>	29.8
e. Large animals, like black bears, concern me.	10.3	19.8	<b>29.3</b>	28.9	11.8
f. I tolerate the ordinary risk from wildlife.	1.1	1.9	14.9	<b>57.1</b>	24.9
g. Where I live, wildlife and humans coexist peacefully.	1.9	3.8	19.5	<b>55.3</b>	19.5
h. I like to see wild animals on my land.	1.1	1.9	14.2	<b>50.2</b>	32.6
i. Property damage from wildlife is part of living in Fremont County.	0.8	4.9	20.5	<b>51.7</b>	22.1
j. I enjoy watching birds near my home.	0.8	.04	9.8	41.7	<b>47.3</b>
k. Wildlife that might carry disease concerns me.	6.1	14.8	25.1	<b>38.8</b>	15.2

**9. In general, my experience with wildlife has been:** (*Circle one number.*)

Very Negative	Neither Negative nor Positive	Very Positive
0.8%	1.5%	12.8%
	28.7%	<b>54.0%</b>

**10. In general, my feelings about wildlife are:** (*Circle one number.*)

Very Negative	Neither Negative nor Positive	Very Positive
0.4%	0.4%	8.3%
	24.2%	<b>66.8%</b>

**11. How important do you think your property is to the wildlife in Yellowstone National Park?** (*Circle one number.*)

Very Unimportant	Unimportant	Neutral	Very Important	Important	Don't Know
8.3%	20.8%	22.3%	<b>26.9%</b>	14.8%	6.8%

**12. For each statement below, circle the number that best reflects your opinion.**  
(Please circle one number for each item.)

I am in favor of programs that promote:

	Strongly Disagree	Disagree	Neutral	Agree	Strongly Agree
a. land conservation in Greater Yellowstone.	3.0%	9.5%	22.0%	<b>36.0%</b>	29.5
b. land conservation elsewhere in the United States.	1.9	7.2	29.3	<b>35.4</b>	26.2
c. wildlife conservation in Greater Yellowstone.	1.9	7.5	16.6	<b>40.8</b>	33.2
d. wildlife conservation elsewhere in the United States.	1.5	4.6	25.5	<b>41.1</b>	27.4

**13. For each statement below, circle the number that best reflects your opinion based on your experiences in Fremont County.**  
(Please circle one number for each item.)

In general, to what extent do you agree with the policies and programs of:

	Always	Usually	Sometimes	Rarely	Never	Don't Know
a. your local government in Fremont County?	0.4%	28.8%	<b>36.0%</b>	13.5%	1.1%	20.5%
b. your local planning board in Fremont County?	0.4	24.2	<b>34.3</b>	15.8	1.9	23.4
c. Idaho Department of Fish and Game?	4.5	<b>46.3</b>	28.0	5.2	2.6	13.4
d. the U.S. Fish and Wildlife Service?	3.7	<b>42.2</b>	28.0	10.8	5.2	13.1
e. the U.S. Forest Service?	3.4	<b>37.6</b>	35.0	10.2	3.0	10.9
f. the Bureau of Land Management?	2.6	32.0	<b>38.7</b>	10.9	2.6	13.2
g. Yellowstone National Park?	9.4	<b>43.4</b>	26.6	8.6	2.2	9.7
h. non-governmental environmental organizations?	2.6	14.6	<b>32.6</b>	19.5	17.2	13.5

**14. When did you last speak with a person from Idaho Department of Fish and Game?**

12.7% within the past month

34.3% within the past year

27.2% more than one year ago

25.7% never

**15. When did someone from Idaho Department of Fish and Game last visit your property?**

3.4% within the past month

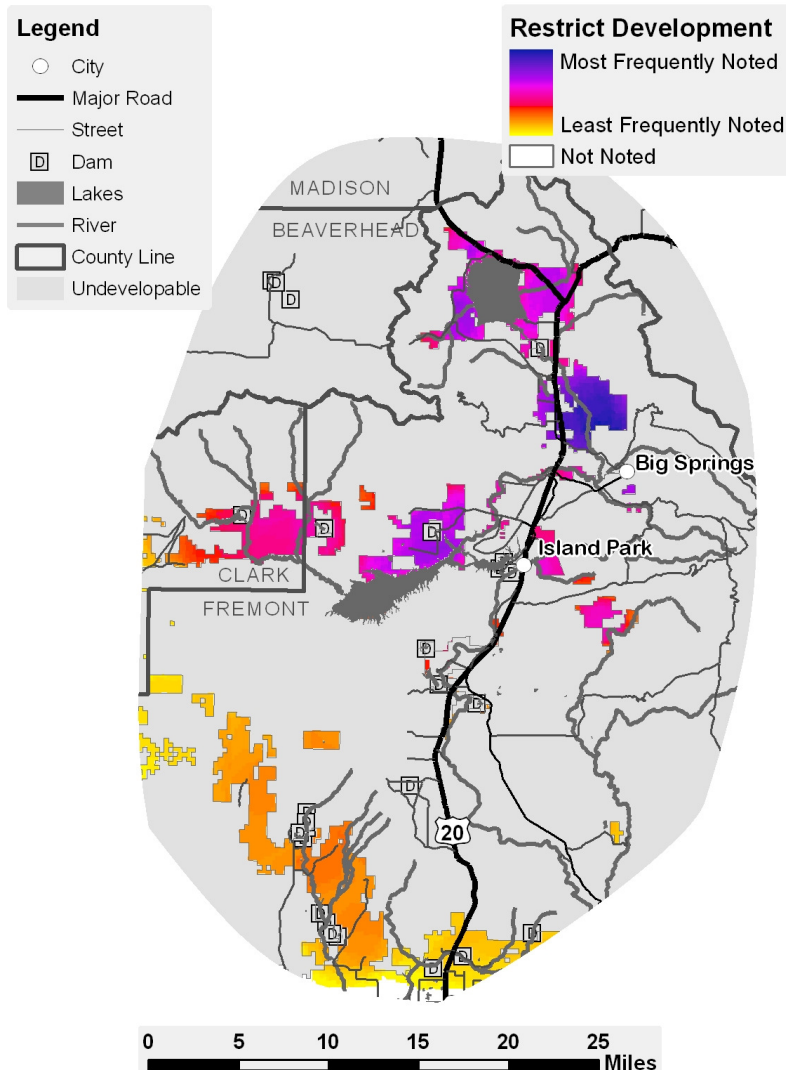
12.5% within the past year

12.5% more than one year ago

71.5% never

**16. Referring to the map and the key showing which land is available for development, please mark the following four items on this map of Island Park.**

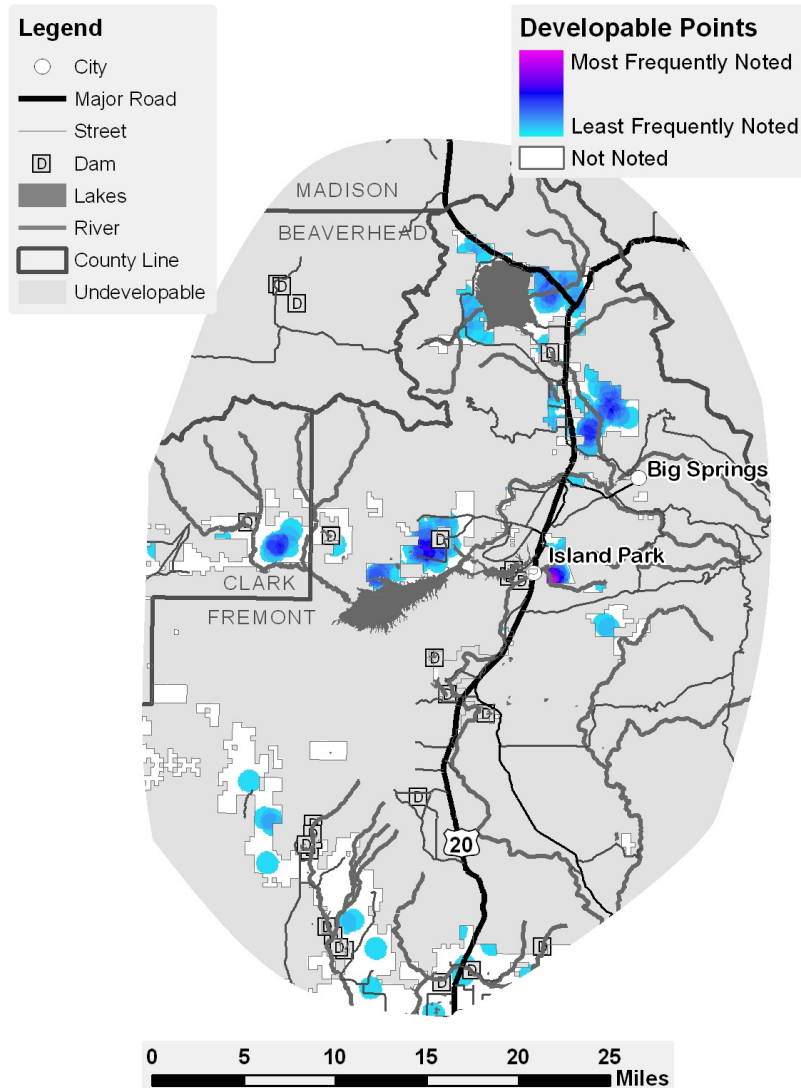
1. Please circle the area(s) of developable land that in your opinion should be restricted from development and maintained as open space.



**What the map shows:** Blue represents areas that respondents most frequently indicated should have restricted development and yellow represents areas that respondents least frequently indicated should have restricted development. The map displays only the responses for private lands. (Some respondents made notations on public lands but this question focuses only on the private lands).

**How we made the map:** All circles drawn by respondents on the mailed in surveys were digitized in GIS and then put into the same map (imagine a map with 100+ circles). Then the circles were counted at each pixel and converted to a color to indicate the frequency with which respondents indicated that place should be restricted from development and maintained as open space.

2. Please put a "D" on the area of developable land that in your opinion is the most appropriate for accommodating new development.

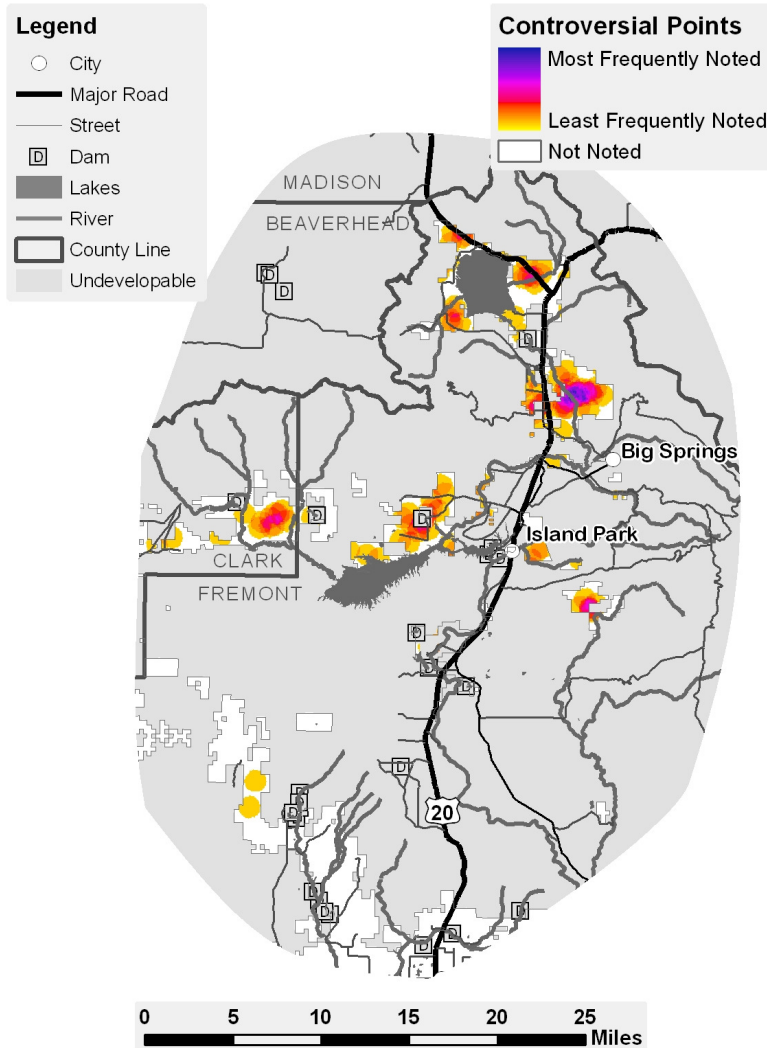


**What the map shows:** The pink dots represent areas that respondents most frequently indicated as most appropriate for development and the blue dots represent areas that respondents selected as appropriate for development but were areas that did not overlap with other respondents' suggestions. The map displays only the responses for private lands. (Some respondents made notations on public lands but this question focuses only on the private lands).

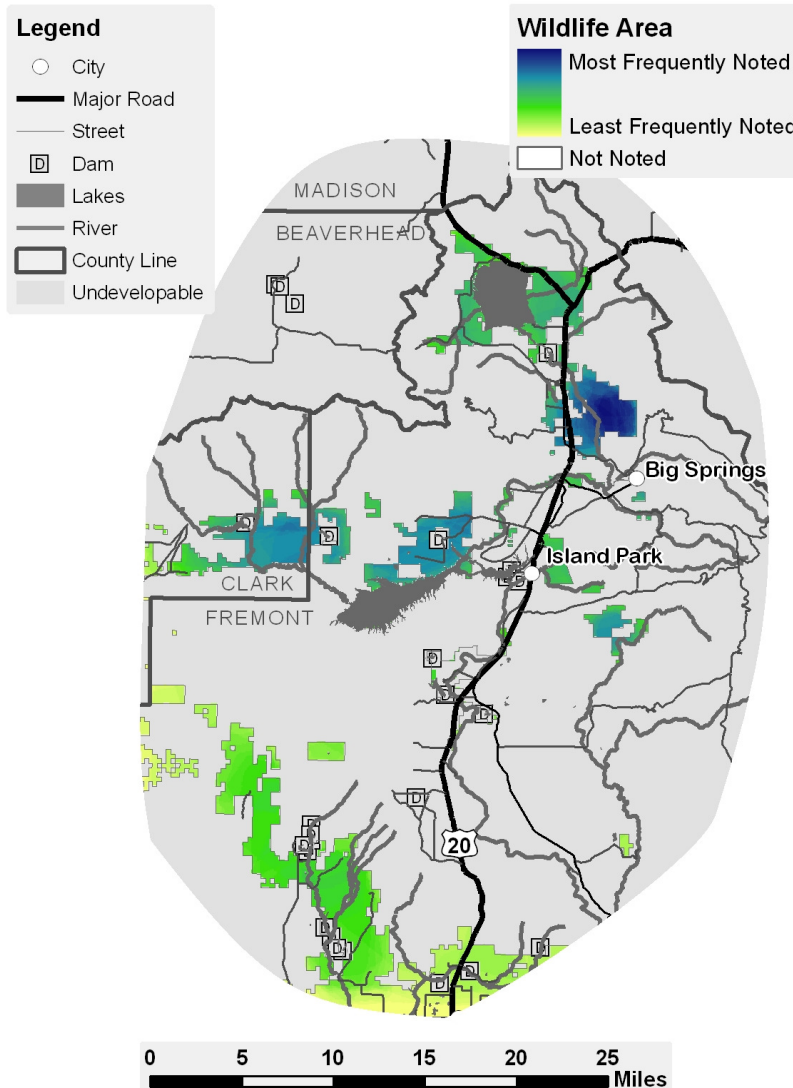
**How we made the map:** All "Ds" drawn by respondents on the mailed in surveys were digitized in GIS and then put into the same map as a point. Then at each point the point plus any points within 1 km were counted and the dots were colored to indicate the frequency with which respondents indicated an area was most appropriate for accommodating new development.



3. Please put an "X" on the area of developable land that is the most controversial for development and conservation.



4. Please lightly shade the area of developable land with dots or lines that, in your opinion, provides the best or most important area for wildlife.



**What the map shows:** Blue represents areas that respondents most frequently indicated as the best or most important for wildlife. Yellow represents areas that respondents selected as the best or most important area for wildlife but were areas that did not overlap with other respondents' suggestions. The map displays only the responses for private lands. (Some respondents made notations on public lands but this question focuses only on the private lands).

**How we made the map:** All lightly shaded areas drawn by respondents on the mailed in surveys were digitized in GIS and then put into the same map as a circles (imagine a map with many circles). Then the circles were counted at each pixel and converted to a color to indicate the frequency with which respondents indicated that place provides the best or most important area for wildlife.

**17. The center section below lists wildlife found in your region. For each species, indicate on the left how frequently you see this species on your land. On the right, indicate how you feel about interactions with this species on your property.**

How frequently do you see this species on your property?*						Species	On average, how would you describe your interactions with this species on your property?					
Daily 0%	Several times per week 0%	Once a month 0%	Several times per month 0.4%	A few times per year 35.3%	never <b>64.3%</b>		Very Negative 4.6%	Negative 8.8%	Neither Negative nor Positive 30.1%	Positive 18.1%	Very Positive 6.0%	N/A
						black bear						
0	0	1.2	2.0	6.0	<b>90.8</b>	beaver	2.0	4.5	19.2	13.1	6.6	<b>54.5</b>
0	0	0	0	0.8	<b>99.2</b>	big horn sheep	1.6	2.7	17.3	7.0	7.0	<b>64.3</b>
0	0	0	0	6.9	<b>93.1</b>	bobcat	1.0	5.7	19.3	11.5	5.7	<b>56.8</b>
0.4	2.0	3.2	2.0	35.9	<b>56.6</b>	coyote	2.4	5.7	24.8	21.4	11.4	<b>34.3</b>
0.4	0.4	2.8	1.6	41.0	<b>53.8</b>	elk	0	0	17.8	25.1	25.1	<b>32.0</b>
2.4	2.0	4.5	2.4	25.3	<b>63.3</b>	frogs and other amphibians	0	2.0	23.0	19.1	19.1	<b>36.8</b>
0	0.4	0.4	0.4	16.6	<b>82.2</b>	grizzly bear	11.9	9.4	18.8	11.9	4.0	<b>44.1</b>
0	0	0	0	3.4	<b>96.6</b>	lynx	2.2	3.2	23.2	7.0	5.9	<b>58.4</b>
0	4.7	9.8	8.2	<b>59.8</b>	17.8	moose	0.4	0.9	15.6	32.0	<b>37.7</b>	13.4
0	0.4	0.4	0.4	3.3	<b>95.4</b>	mountain lion	6.3	8.5	17.5	4.8	6.3	<b>56.6</b>
0	2.8	6.4	6.54	40.6	<b>43.8</b>	mule deer	0.5	1.4	13.6	27.6	<b>30.8</b>	26.2
0.4	2.9	3.7	3.3	12.8	<b>77.0</b>	pronghorn antelope	0.5	0	18.8	18.3	17.8	<b>44.6</b>
0.4	0.58	2.8	3.2	28.7	<b>64.1</b>	red fox	0.5	1.9	20.6	24.3	17.3	<b>35.5</b>
0.4	1.2	2.0	2.9	29.8	<b>63.7</b>	sage grouse	0	0.5	14.7	26.0	20.6	<b>38.2</b>
2.9	4.1	6.9	3.7	19.6	<b>62.9</b>	sandhill cranes	0	0	18.2	21.5	23.9	<b>36.4</b>
1.7	2.5	5.9	1.7	10.1	<b>78.1</b>	white pelicans	2.1	7.3	17.7	12.0	13.0	<b>47.9</b>
0.4	2.8	5.6	3.2	28.6	<b>59.3</b>	white-tailed deer	0.5	0.5	17.1	22.9	24.9	<b>34.1</b>
0	0	0	0	4.9	<b>95.1</b>	wolverine	3.7	8.9	17.3	7.3	4.2	<b>58.6</b>
0	0	0.4	0	10.7	<b>88.9</b>	wolf	16.4	6.4	15.4	6.2	6.2	<b>49.2</b>
0.8	3.0	6.4	3.8	21.6	<b>64.4</b>	yellow warbler	0.5	0.5	18.6	18.6	25.3	<b>36.6</b>

\*we know that some wildlife may be seasonal, please report the frequencies based on when each species is present in your region.

**18. The center section below lists different tools for guiding land-use on private land. On the left, indicate how familiar you are with the strategy/tool. On the right, indicate how acceptable the item is to you personally.**

How familiar are you with the following tools & strategies for guiding development on private lands?				Strategy/Tool	How acceptable are these tools for guiding development on private-land to you personally?			
I have not heard of it	I have heard of it, but do not know details	I know a little bit about it	I am familiar with it		Not Acceptable	Somewhat Acceptable	Acceptable	Don't Know
26.2%	15.6%	24.6%	<b>33.6%</b>	Set-backs from wet/riparian areas	9.4%	12.9%	<b>50.2%</b>	27.5%
25.5	23.5	23.0	<b>28.0</b>	Wildlife-friendly fencing	8.7	15.2	<b>25.6</b>	23.5
<b>50.6</b>	17.4	17.4	14.5	Night-lighting guidelines	11.6	14.7	<b>30.4</b>	43.3
8.1	11.3	23.1	<b>57.5</b>	Ordinances for securing outdoor trash	4.1	8.7	<b>75.1</b>	12.0
22.5	19.3	22.1	<b>36.1</b>	Conservation easements (limits activities permissible on property)	18.6	18.6	<b>37.3</b>	25.4
28.8	17.7	18.1	<b>35.4</b>	Purchase of development rights (limits future development)	12.4	17.5	<b>41.5</b>	28.6
25.4	20.9	18.9	<b>35.2</b>	Fee simple purchases (outright purchase of land for conservation purposes)	13.1	16.1	<b>44.5</b>	26.3
25.4	18.9	20.5	<b>35.2</b>	Open-space zoning (e.g., minimum acreage per unit)	9.9	18.9	<b>43.3</b>	27.9
28.3	18.4	19.3	<b>34.0</b>	Clustered development (concentrates new development near existing)	19.7	20.1	<b>32.6</b>	27.5
<b>30.7</b>	19.7	16.8	32.8	Tax incentives for wildlife conservation (e.g., providing forage for wintering elk)	9.3	18.6	<b>49.6</b>	22.5
<b>41.0</b>	16.4	19.3	23.4	Payments to landowners for wildlife conservation (e.g., having a wolf den on property)	19.2	19.2	<b>33.8</b>	27.8

**19. For each statement below, circle the number that best reflects your opinion.**  
*(Please circle one number for each item.)*

	Strongly Disagree	Disagree	Neutral	Agree	Strongly Agree	Don't Know/Not Applicable
a. I am interested in changing the way I manage my property to protect wildlife.	9.4%	17.3%	<b>32.7%</b>	18.5%	7.9%	14.2%
b. I am interested in changing my livestock grazing patterns to protect wildlife.	5.6	4.4	14.0	1.6	2.4	<b>72.0</b>
c. I am interested in landscaping my land with native vegetation.	4.7	5.8	19.0	<b>37.6</b>	19.0	14.0
d. Profitability is the primary consideration driving my land-use decisions.	<b>26.2</b>	24.2	16.4	5.9	2.0	25.4
e. Balancing profit and the needs of wildlife is the primary consideration driving my land-use decisions.	14.5	11.8	26.7	9.8	5.1	<b>32.2</b>
f. I am willing to install wildlife-friendly fencing.	13.4	17.8	17.0	16.2	4.7	<b>30.8</b>
g. I am willing to dispose of carcasses securely away from scavenging wildlife.	2.8	4.4	13.5	30.6	15.1	<b>33.7</b>
h. I am interested in restricting development rights on my property to maintain open space.	11.0	10.6	15.3	18.4	13.3	<b>31.4</b>
i. I am interested in restricting development rights on my property to protect the ranching lifestyle.	8.3	10.7	17.5	10.7	6.7	<b>46.0</b>
j. I am willing to store my barbeque grill inside.	3.9	12.1	18.4	<b>35.2</b>	23.0	7.4
k. I am willing to store my trash inside.	2.3	6.2	10.9	<b>42.6</b>	34.0	3.9
l. I am willing to have some of my tax dollars used for wildlife conservation on private land.	11.4	12.6	21.7	<b>33.1</b>	16.5	4.7
m. I would be willing to see some of my tax dollars invested in another Fremont County resident's property that protects wildlife.	14.5	21.6	23.5	<b>23.9</b>	12.2	4.3
n. I am interested in leveraging a bond against Fremont County's revenue that would protect wildlife.	12.5	22.7	<b>26.7</b>	14.5	11.4	12.2

**20. For each statement below, circle the number that best reflects your opinion.** *(Please circle one number for each item.)*

	Strongly Disagree	Disagree	Neutral	Agree	Strongly Agree	Don't Know
a. Growth and development can be accommodated without negatively affecting wildlife.	7.8%	26.4%	11.6%	<b>41.5%</b>	8.9%	3.9%
b. Island Park has enough protected land for wildlife.	13.2	<b>28.3</b>	21.7	18.2	6.6	12.0
c. I support development restrictions that benefit wildlife.	5.0	9.3	15.9	<b>41.9</b>	24.8	3.1
d. I am opposed to most development restrictions.	13.2	<b>30.0</b>	28.8	16.7	4.3	7.0
e. Island Park can accommodate a lot more growth and development.	20.0	<b>37.3</b>	16.9	15.0	4.2	6.5
f. Counties should have guidelines for promoting developments that will not harm wildlife.	3.1	3.9	13.6	<b>49.0</b>	28.4	1.9
g. There is adequate planning in Island Park to manage growth and development.	14.4	<b>27.6</b>	23.3	10.1	4.7	19.8
h. The use of land should be determined only by the person who owns it.	11.2	<b>36.4</b>	22.1	16.7	10.9	2.7
i. I would support changes in land use regulations if it would benefit wildlife.	2.4	8.7	34.3	<b>34.6</b>	13.8	6.3
j. Land-use regulations hurt more than they help an area.	8.9	21.8	<b>41.2</b>	13.2	4.3	10.5
k. Land should be set aside and protected from development.	5.8	7.4	14.7	<b>38.4</b>	30.2	3.5

Please tell us about your background so we can better understand your responses.

21. In what year were you born? Mean =1948, Range = 1916-1981

22. What is your gender? (Check one.)

74.8% Male 25.2% Female

Use the list below to answer questions 23, 24 and 26.

- a. Rural – mostly agriculture
- b. Rural – mostly residential
- c. Small town
- d. Suburban
- e. Urban
- f. Not applicable

23. Which category from the list above best describes the area you lived in most of the time before your 18<sup>th</sup> birthday?

(Please write letter from the list above.)

a. 33.5% b. 8.9% c. 29.2% d. 19.8% e. 8.2% f. 0.4%

24. If you have moved to Island Park from elsewhere, which category from the list above best describes the area you lived in prior to moving?

(Please write letter.)

a. 14.7% b. 11.6% c. 12.0% d. 26.2% e. 10.7% f. 24.9%

25. Are you currently a permanent or seasonal resident of Island Park?

7.8% Permanent -> For how many years? Mean=15.36 years, range 2-37  
75.8% Seasonal -> For how many years? Mean=17.54, years, range 1-57  
15.6% I do not reside in Island Park for any part of the year.

26a. If Seasonal, how much time do you spend at this property?

(Please check one.)

6.9% less than 1 week per year 13.9% 4-6 months per year  
51.0% 1-7 weeks per year 3.5% more than 6 months per year  
24.8% 2-3 months per year

26b. If you are a seasonal resident, which category from the list above best describes the area where you are a permanent resident?

(Please write letter from list used in question 23 and 24.)

a. 12.7% b. 13.8% c. 20.6% d. 33.9% e. 16.9% f. 2.1%

**27. What do you intend to do with your property in Island Park in the next 5 years? (Please check all that apply.)**

<u>57.0%</u>	Leave it as is
<u>17.1%</u>	Give some or all of my land to my children or other heirs
<u>8.9%</u>	Sell the whole property
<u>0%</u>	Divide all or part of the land and sell the subdivisions
<u>19.4%</u>	Build a single residence
<u>0.8%</u>	Build multiple residences
<u>0%</u>	Develop it for agricultural purposes
<u>0.8%</u>	Develop it for commercial recreational purposes
<u>15.5%</u>	No plans/I don't know
<u>5.0%</u>	Other (please specify _____ [7 intentions listed] _____)

**28. What is your occupation? \_\_\_\_\_**

<u>42.4%</u>	Retired, housewives, unemployed
<u>26.5%</u>	Professional, technical, kindred
<u>2.4%</u>	Farmers, farms mgrs
<u>10.6%</u>	Mgrs, officials, proprietors
<u>1.2%</u>	Clerical, kindred
<u>5.7%</u>	Sales
<u>4.5%</u>	Craftsmen, foremen, military, kindred
<u>3.3%</u>	Operatives, kindred
<u>0.4%</u>	Private household workers
<u>2.0%</u>	Service workers, includes protective service (police, etc.)
<u>0%</u>	Farm laborers, farm foremen
<u>0.8%</u>	Laborers

**29. Please indicate which of the following provide income for your household, now or in the past. If currently providing income, please list what percent of your income comes from that source.**

	No	Yes, in the past	Yes	Percent of 2008 Income	
a. raising livestock	85.9%	<b>6.5%</b>	7.6%	_____	
b. raising crops	86.9%	4.9%	8.2%	_____	
c. guiding wildlife watchers	100.0%	0%	0%	_____	
d. guiding hunters	98.9%	0.6%	0.6%	_____	
e. guiding anglers	98.3%	<b>1.1%</b>	0.6%	_____	
f. other tourism or recreation business	95.3%	1.7%	2.9%	_____	
g. work you commute to unrelated to a-f	59.3%	6.0%	34.7%	<u>Mean=82.9%</u>	
h. work you telecommute to unrelated to a-f	90.1%	1.7%	8.1%	_____	
i. investments or pensions	50.5%	4.9%	<b>44.7%</b>	<u>Mean=69.3%</u>	

For questions that less than 30 respondents answered, we did not calculate means.



**30. What was your total family income before taxes in 2008?**

*(Please check one category.)*

<u>20.5%</u>	\$49,999 or less	<u>12.9%</u>	\$150,000-199,999
<b><u>34.4%</u></b>	\$50,000-99,999	<u>9.4%</u>	\$200,000 or more
<u>22.8%</u>	\$100,000-149,999		

**31. How much school have you completed? (Check the highest level.)**

<u>1.9%</u>	Some high school	<u>26.6%</u>	Bachelor's degree or equivalent
<u>11.8%</u>	High school or CED	<u>19.8%</u>	Master's degree or equivalent
<b><u>27.8%</u></b>	Some college	<u>12.2%</u>	Other degree (M.D., Ph.D., J.D., etc.)

**32. Approximately what percent of your total leisure time do you spend outdoors?**

Mean = 50.8 % of leisure time

**33. Approximately what percent of your total work time do you spend outdoors?**

Mean = 24.3 % of work time

**34a. Are you willing to be contacted in the future for:**

a. community meetings or other activities related to this survey?

57.8% No 42.2% Yes

b. to monitor wildlife and map wildlife movements in your community?

61.5% No 38.5% Yes

**34b. If you answered yes, please provide:**

Name \_\_\_\_\_

Phone number \_\_\_\_\_

Mailing address \_\_\_\_\_

Email \_\_\_\_\_

**Reminder, even if you provide us your name in question 34, we will never associate your name with your responses to questions 1-33.**

**Please use the space below for any comments you may have about the survey or wildlife and private lands management. If you have additional comments or questions please contact us at**

**[islandparksurvey@gmail.com](mailto:islandparksurvey@gmail.com)**

21% (57) of the respondents provided additional comments.

**Thank You for Your Time and Effort!**

**To return this questionnaire, seal it with the white removable seal (postage has been provided) and drop it in the nearest mailbox.**

### Comparison of non-respondent results with survey results for Island Park.

Question	Significant Difference?	Statistics	Notes
How long have you owned or leased property in Island Park?	No		
Are you currently a permanent or seasonal resident of Island Park, or do you not reside there for any part of the year?	Yes	$\chi^2=7.994$ $p=.046$	Non-respondents were all seasonal residents.
On a 5-point scale, where 1 is very negative and 5 is very positive, how would you rate your general experiences with wildlife?	No		
How about your general feelings about wildlife?	No		
To what extent do you agree with the policies and programs of your local planning board in Freemont County?	No		
To what extent do you agree with the policies and programs of Idaho Fish and Game?	No		
To what extent do you agree with the policies and programs of the U.S. Forest Service?	No		
How frequently have you seen elk on your property?	Yes	$\chi^2=16.891$ $p=.005$	The percentages of non-respondents seeing elk were more evenly distributed across the choices (never, several times per week, several times per month, once per month, a few times per year, never)
On average, how would you describe your interactions with elk on your property?	No		
How frequently have you seen black bears on your property?	Yes	$\chi^2=21.353$ $p<.000$	The percentages of non-respondents seeing black bear were higher for Once per month yet a little lower for a few times per year.
On average, how would you describe your interactions with black bears on your property?	No		
How frequently have you seen grizzly bears on your property?	No		

On average, how would you describe your interactions with grizzly bears on your property?	No		
How frequently have you seen moose on your property?	No		
On average, how would you describe your interactions with moose on your property?	No		
How familiar are you with conservation easements that limit activities permissible on property?	Yes	$\chi^2=9.056$ , $p=0.029$	A higher percentage of non-respondents were more familiar or knew a little bit about conservation easements compared to survey respondents.
How acceptable to you personally are conservation easements as a tool for guiding development on private land?	No		
How familiar are you with purchasing development rights as a tool, which would limit future development?	No		
How acceptable to you personally are purchasing development rights as a tool for guiding development on private land?	Yes	$\chi^2=9.272$ , $p=0.010$	A higher percentage of non-respondents deemed purchase of development rights somewhat acceptable. A lower percentage of non-respondents deemed this tool unacceptable.
How familiar are you with clustered development as a tool, which concentrates new development near existing development?	No		
How acceptable to you personally is clustered development as a tool for guiding development on private land?	No		
Gender	No		